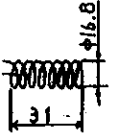
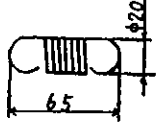


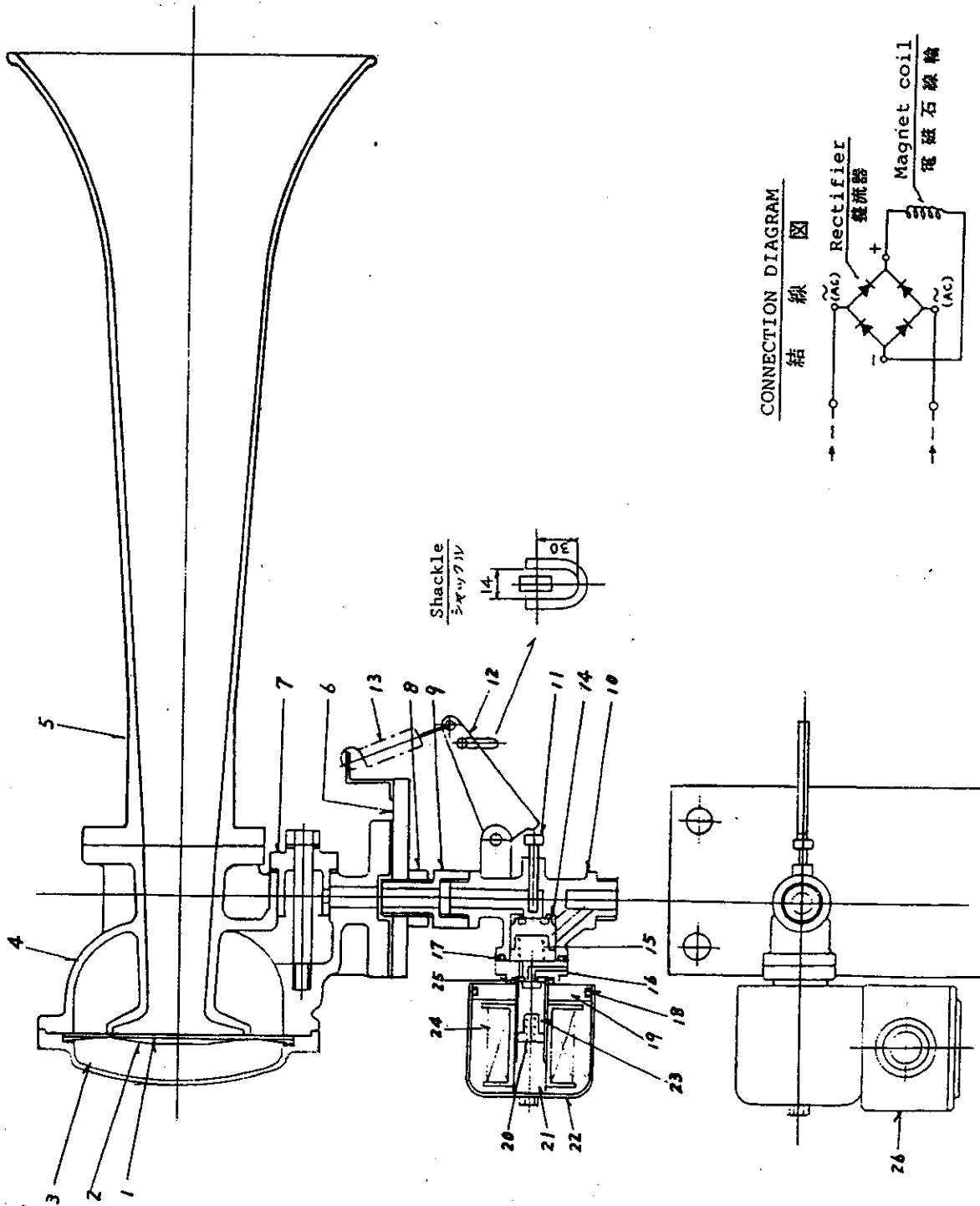


SHIP NO.	SPARE PARTS LIST FOR		U S E				SETS PER VESSEL	
	AIR HORN エアホーン		A150ESS A150ESSH				2	
ITEM NO.	NAME OF PART	OUTLINE	TYPE DRAWING NO.	QUANTITY			REMARKS	
				WORKING		SPARE	MASS IN kg (PER ONE)	MATERIAL
PER SET	PER VESS.							
31	Valve spring 弁用ばね		φ 1.4 8 T.	1	2	1	0.005	Stainless steel SUS316 B11
32	Lever spring 手動レバー用ばね		φ 2.5 13 T.	1	2	1	0.03	Stainless steel SUS316 B143-1
→ 33	Diaphragm (A) 振動板(A)			1	2	1	0.26	Phos. bronze C5210 DAS150-5
→ 34	Diaphragm (B) 振動板(B)			1	2	1	0.09	Phos. bronze C5210 DAS150-6
MFR'S NAME & ADDRESS		IBUKI KOGYO CO., LTD. 7-26, Takadono 1-chome, Asahi-ku, Osaka, 535 Japan. Tel. Osaka (06) 922-5115 Fax. Osaka (06) 924-3567				D. W. N. C. K. D. DWG. NO.		<i>RM</i> <i>Jan Jan</i> SPJ- 2300B-2-5



Whistle (Above 138dB)
汽笛 (138dB 以上)

A150ESS 形 AIR HORN
エアホーン

CONSTRUCTION VIEW
構造図

D.W.N. <i>Shin</i>	D.A.T.E. MAY. 19 1979
G.K.D. <i>Ej</i>	DWGNO. SST-2310B-2
IBUKI KOGYO CO., LTD. OSAKA JAPAN	