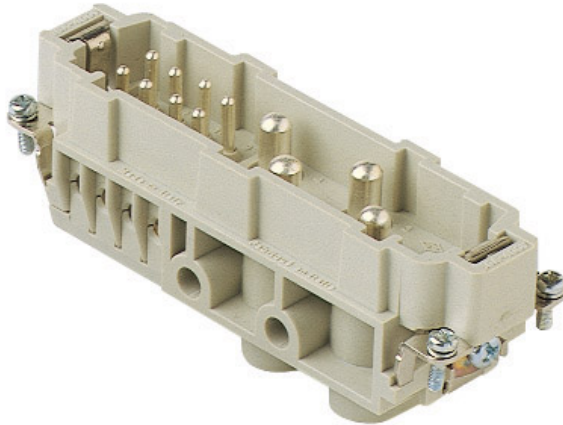


Product Sheet

Part Number: CXM 4/8



Family	inserts
Version	screw terminal connections
Series	CX
Product type	with male contacts
Model	male insert
Reference standard	EN 61984 (2001-11)
Contact type	silver plated
No. of poles	4 poles +
Auxiliaries poles	8 poles (16A max - 230/400V/4kV/3)
Voltage (V)	400V
Current (A)	80A (A.C./D.C.)
Wire section	4mm ² - 16mm ²
Awg size	12 - 6
IP degree of protection	IP20 degree of protection without enclosure; IP65, IP66, IP67, IP68 (EN 60529) and IP69K (DIN 40050 - 9) with enclosure

The information and the dimensions contained are not binding and may be changed without prior notice.
The drawing's dimensions are in mm.

Fixing centre distance size "104.27"

Impulse withstand voltage 6kV

Pollution degree 3

Barcode EAN13 8015747042635

Notes

CX 4/8 inserts:

- characteristics according to EN 61984:
(80A 400V 6kV 3)
(80A 400/690V 6kV 2)
8 Auxiliary contacts: (16A 230/400V 4kV 3)
8 Auxiliary contacts: (16A 400V 4kV 2)
- for maximum current load, see the insert load curve section
- inserts for applications with temperatures up to 180 °C, available on request

The information and the dimensions contained are not binding and may be changed without prior notice.
The drawing's dimensions are in mm.