

TYPE SW or BW

Plugvalves with Weld-Ends

DN 10 - 500 / PN 10 - 100

NPS 3/8" - 20" / class 100 - 600

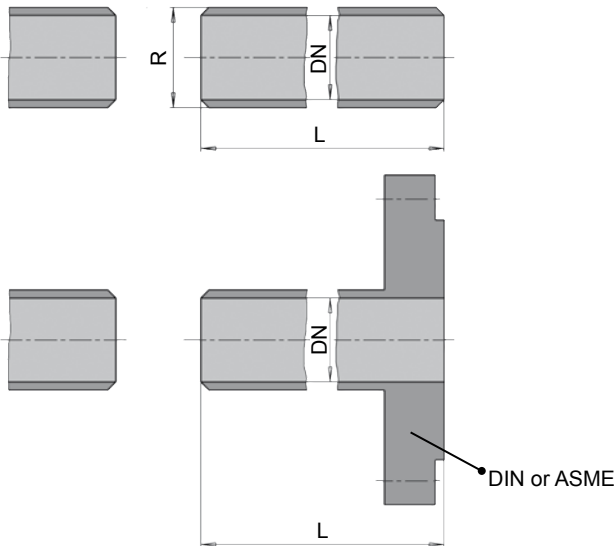
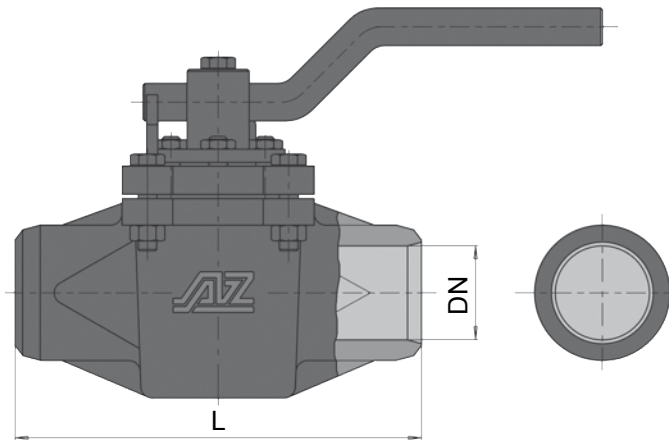


1.10

- free of cavity
- maintenance free - self lubricating
- mounting-flange for actuators acc. to DIN ISO 5211
- vacuum tight
- easy accessible adjustment of the plug
- face to face acc. to DIN und ASME
- rating till PN 100 resp. ANSI CLASS 600
- Firesafe Design API 607 / ISO 10497 (outside)
- TA - Luft approval

TYPE BW

Dimensions DN 10 - 400 NPS 3/8" - 16" acc. to DIN / ASME

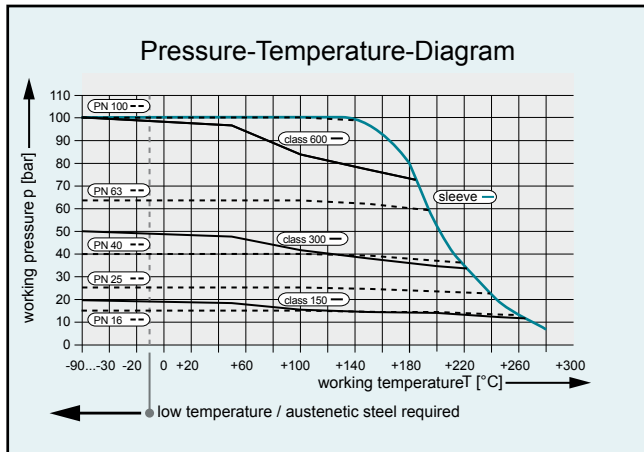


Order Example: A-2-25-BW-PN 25-1.4408

A = weld ends, 2 = two-way, 25 = size 25
 BW = type butt-welding ends, PN 25 = rating 25,
 1.4408 = body material

Order Example: AF-2-25/25-BWF-PN25-1.4308

AF = butt welding flange, 2 = two-way
 25 / 25 = size 25 BW with 25 flange,
 BWF = type butt-welding flange, PN 25 = rating 25,
 1.4308 = body material



operating temperature < -30°C and > 220 °C need to be approved by AZ confirming their operating conditions.

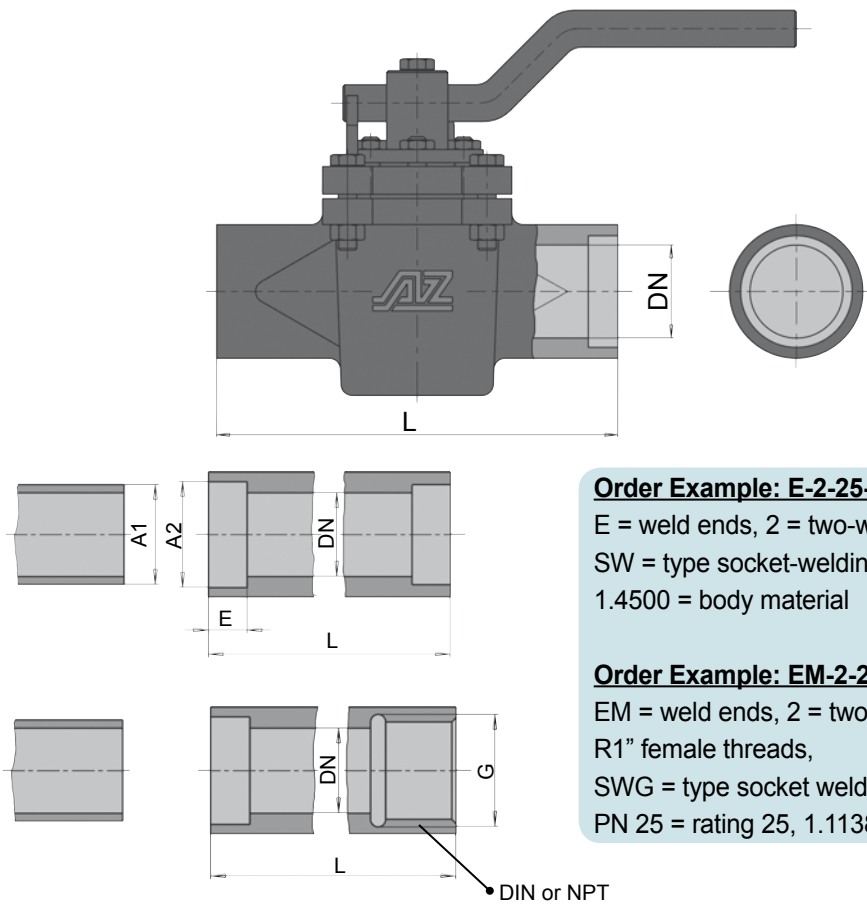
Butt-welding ends					
DN		L		R	
DIN	ANSI	DIN	ANSI	DIN	ANSI
10	3/8"	165	130	18	18
15	1/2"	165	140	22	22
20	3/4"	165	152	28	28
25	1"	165	165	35	35
32	1 1/4"	180	178	44	44
40	1 1/2"	200	190	50	50
50	2"	230	216	62	62
65	2 1/2"	290	241	77	77
80	3"	310	283	91	91
100	4"	350	305	117	117
125	5"	325	381	144	144
150	6"	432	403	172	172
200	8"	508	419	223	223
250	10"	450	450	278	278
300	12"	500	500	329	329
350	14"	550	550	362	362
400	16"	600	600	413	413
450	18"	650	650	464	464
500	20"	700	700	516	516

CAUTION: On order please state external and internal dimensions of pipe..
 Other connections on request

Dimensions of column L / R acc to:
 - DIN EN 12627 / EN 12982 (max. PN 100)
 - ASME B16.10 / B16.25 Schedule No. 40 (max. 600 lbs)

TYPE SW

Dimensions DN 10 - 400 NPS 3/8" - 4" acc. to DIN / ASME



Order Example: E-2-25-SW-PN 25-1.4500

E = weld ends, 2 = two-way, 25 = size 25
 SW = type socket-welding, PN 25 = rating 25,
 1.4500 = body material

Order Example: EM-2-25/R1"-SWG-PN25-1.1138

EM = weld ends, 2 = two-way, 25/R1" = size 25 with
 R1" female threads,
 SWG = type socket welding w. threaded connection,
 PN 25 = rating 25, 1.1138 = body material

Socket Welding ends										
DN		L		A1		A2		E		G
DIN	ANSI	DIN	ANSI	mm	inch	mm	inch	mm	inch	DIN
10	3/8"	165	130	17,1	0,675	17,25 ^{+0,25}	0,690 0,700	9,5	0,38	Rp3/8"
15	1/2"	165	140	21,3	0,840	21,71 ^{+0,25}	0,855 0,865	9,5	0,38	Rp1/2"
20	3/4"	165	152	26,7	1,050	27,05 ^{+0,25}	1,065 1,075	13	0,5	Rp3/4"
25	1"	165	165	33,4	1,315	33,78 ^{+0,25}	1,330 1,340	13	0,5	Rp1"
32	1 1/4"	180	178	42,2	1,660	42,54 ^{+0,25}	1,675 1,685	13	0,5	Rp1 1/4"
40	1 1/2"	200	190	48,3	1,900	48,64 ^{+0,25}	1,915 1,925	13	0,5	Rp1 1/2"
50	2"	230	216	60,3	2,375	61,11 ^{+0,25}	2,406 2,416	16	0,62	Rp2"
65	2 1/2"	290	241	73,0	2,875	73,87 ^{+0,38}	2,906 2,921	16	0,62	-
80	3"	310	283	88,9	3,500	89,86 ^{+0,38}	3,535 3,550	16	0,62	-
100	4"	350	305	114,3	4,500	115,53 ^{+0,38}	4,545 4,560	20	0,75	-

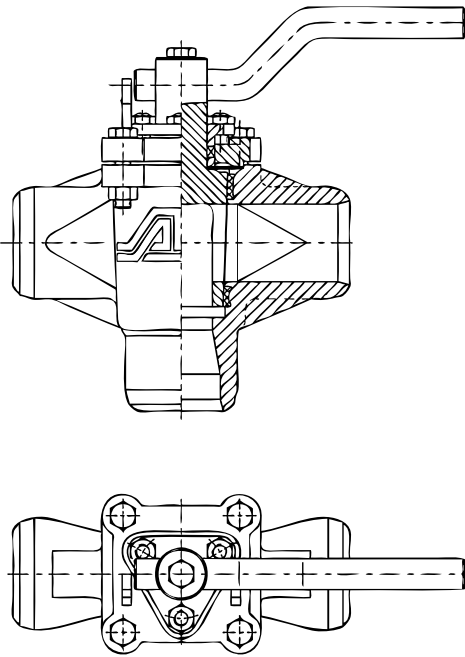
Dimensions acc. to ANSI B16.11

During welding the temperature at the centre of the PTFE sleeved plug-valves must not exceed 200°C.
 (A moist wrapping can keep this area cool.)

CAUTION: On order please state external and internal dimensions of pipe..
 Other connections on request

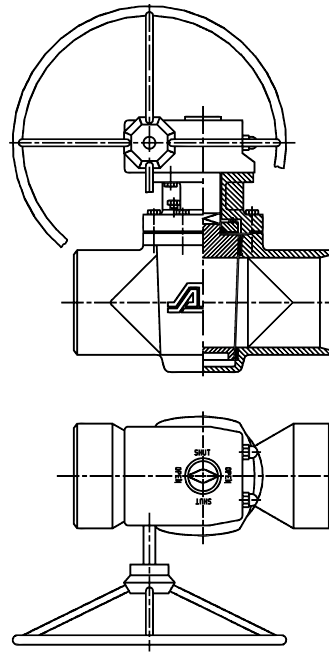
TYPE SW or BW

Order example and designs



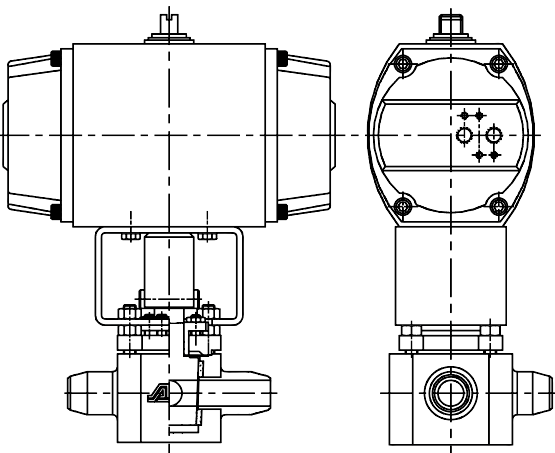
Order Example: A-3-DN25-BW-PN40-1.4408

A = weld ends, 3 = three-way, DN25 = size 25,
 BW = butt weld ends, PN40 = rating 40,
 1.4408 = body material



Order Example: A-2-6"-BW-ANSI300-1.4308-GT

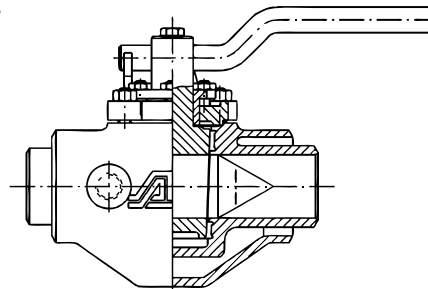
A = weld ends, 2 = two-way, 6" = size 6"
 BW = butt weld ends, ANSI300 = rating,
 1.4308 = body material, GT = reduction gear (see leaflet 1.1)



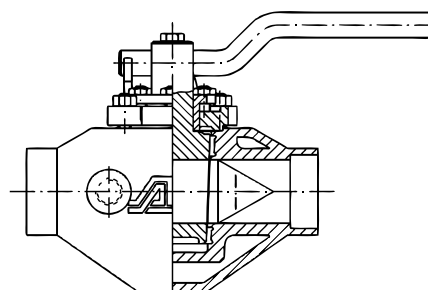
Order Example: A-3-W-DN25-BW-PN40-1.4571-AT

A = weld ends, 3 = three-way, W = horizontal, DN25 = size,
 BW = butt weld ends, PN40 = rating, 1.4571 = body material,
 AT = pneum. actuator (see leaflet 9.1).

BW



SW



Order Example: E-2-DN20-SW-PN40-1.4408-HM (pic. 2)

E = weld ends, 2 = two-way, DN20 = size,
 SW = socket weld ends, PN40 = rating,
 1.4408 = body material, HM = heating jacket (see leaflet 1.6, 1.7)

On enquiry / order

Please state material for body and plug.



AZ-Armaturen GmbH
 D-78087 Mönchweiler
 Waldstraße 7
 Telefon: +49 (0)7721 7504-0
 Telefax: +49 (0)7721 7504-13
 info@az-armaturen.de
 www.az-armaturen.de