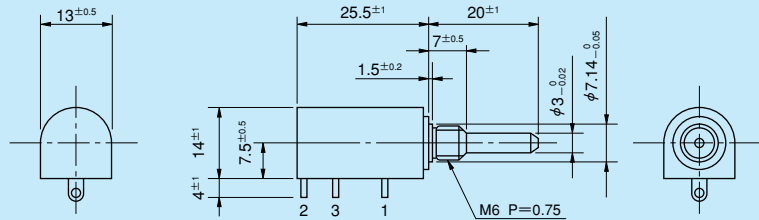


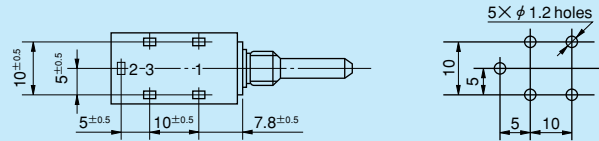
● Standard Dimensions

● With lug terminals

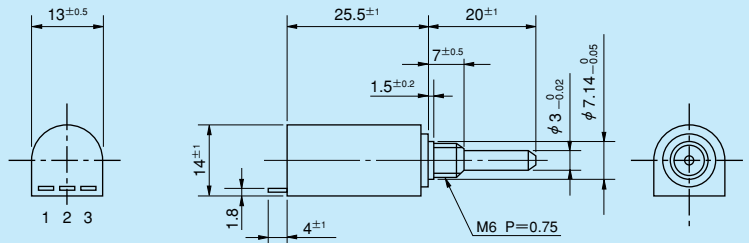


● With pin terminals for p.c. board

Terminal Holes Layout



● With rear lug terminals



- Note: 1. 1 pc. each inner teeth washer and hex nut are attached.
- 2. Outer dimensions of 5-turn version are same as those of 10-turn.
- 3. Please process the mounting hole on the panel to be mounted with this potentiometer by the diameter of 7.14mm<sup>+0.05</sup><sub>0</sub>.

● Standard Model Nos.

Bushingmount type:

With lug terminals:

- 12HPC-5 (5-turn)
- 12HPC-10 (10-turn)

With pin terminals for p.c. board:

- 12HPC-5P (5-turn)
- 12HPC-10P (10-turn)

With rear lug terminals:

- 12HPC-5W (5-turn)
- 12HPC-10W (10-turn)

● General Specifications

Standard Resistance

Range: 100Ω to 50kΩ (5-turn)  
100Ω to 100kΩ (10-turn)

Total Resistance

Tolerance: Standard Class ±3% (H)  
Precision Class ±1% (F)

Independent Linearity

Tolerance: 

	5-turn	10-turn
Standard Class	±0.35%	±0.25%
Precision Class	±0.2%	±0.1%
(Within 5kΩ)	(±0.25%)	(±0.15%)

Power Rating:

0.75W (5-turn)  
1.5W (10-turn)

Noise:

Within 100Ω E.N.R.

Electrical Travel:

360° × n ± 5° (n: No. of turns)

Mechanical Travel:

360° × n <sup>+15°</sup><sub>0°</sub> (n: No. of turns)

**Insulation Resistance:** Over 1,000MΩ at 500V.D.C.

**Dielectric Strength:** 1 minute at 1,000V.A.C.

**Starting Torque:** Within 3mN·m (30gf·cm)

**Stopper Strength:** Approx. 0.15N·m (1.5kgf·cm)

**Max. Torque exerted on fastening the mounting nut to the bushing:**

Within 0.8N·m (8kgf·cm)

**Max. Working Voltage:** 450V

**Resist. Temperature Coefficient of Wire:**

±20p.p.m./°C

**Mass:**

Approx. 10g  
(Both 5-turn and 10-turn)

● Standard Resistance Values ■ No. of Wire Turns ■ Resistance Wire Used

Resist. Value (Ω)	100	200	500	1k	2k	5k	10k	20k	50k	100k
12HPC-5	920	1,190	1,250	1,510	1,790	2,380	3,120	3,800	5,430	—
12HPC-10	1,690	1,850	2,560	2,500	3,030	4,170	4,760	6,250	8,330	10,870
Resist. Wire Used	Cu-Ni System					Ni-Cr System				

● Special Specifications Available

3-turn type (S12HPC-3), Lower resistance values (20Ω, 50Ω), Rear shaft (0.8mm dia. and 10mm length), Special machining on the shaft, Simple sealed housing.