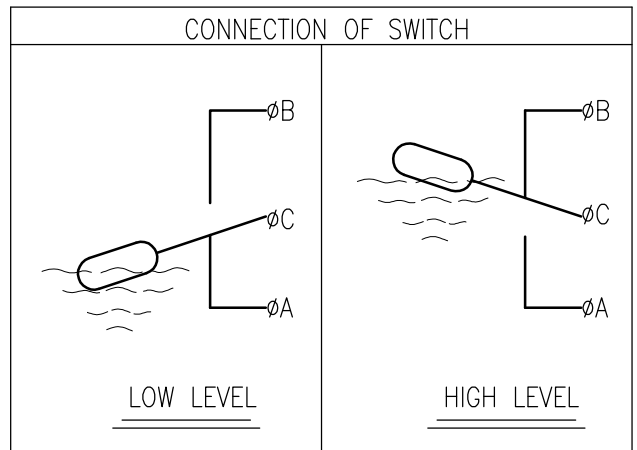


FOR	LEVEL SWITCH		
FLUID NAME	Water	Sp.Gr.	1
MOUNTING	SIDE		
PROTECTION	WEATHER PROOF		
MAX. PRESSURE	10	Kgf/cm <sup>2</sup>	
MAX. TEMP.	100	°C	

PROCESS CONN. SIZE	<input checked="" type="checkbox"/> 50A JIS 10K RF(STD.) <input type="checkbox"/>
--------------------	--

SWITCH	TYPE	MICRO SWITCH	
	CONTACT	FROM	<input checked="" type="checkbox"/> SPDT <input type="checkbox"/> DPDT
		RATING	AC 250V, 5A/DC 120V, 0.5A

NO.	DESCRIPTION	MATERIAL	REMARK
1	COVER	AL.C	
2	BODY	AL.C	
3	PROCESS CONN.	304 SS	
4	FLOAT	316L SS	
5	STOPPER	316L SS	
6	MAGNET HOLDER	316L SS	
7	ROD	316L SS	
8	PIN	316L SS	
9	NAME PLATE	AL	



- NOTE
1. GENERAL TOLERANCE ±3mm EXCEPT AS NOTED.
  2. Q'TY : 2 SET(S)
  3. TAG NO. : \_\_\_\_\_

	..					HITROL CO., LTD.	SCALE	N.S	UNIT	mm	SHEET NO.	/
	..						TITLE	PROJECT				
..						LEVEL SWITCH HM-10	DRAWING NO.					
..							HM10-GA-001					
SEP. 2016	1ST ISSUE	H J KIM	B S SUNG	Y H KIM								
NO.	DATE	REVISION	REV'D BY	CHK'D BY	APP'D BY							

This drawing is the property of HITROL and shall not be copied, communicated, or given for third-party except with our written permission. This drawing is version 2.0 at last modify SEP, 2016