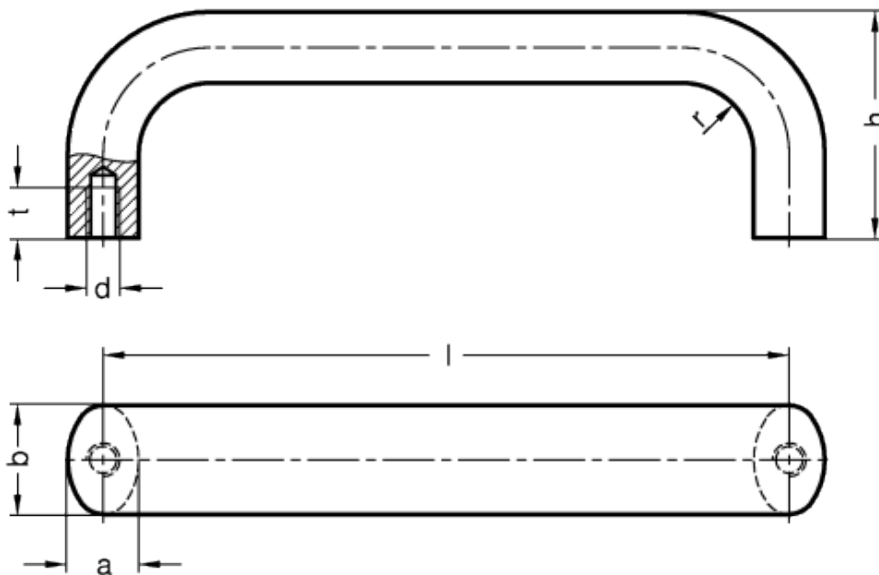


# GN 565

Handles



## technical informations

### Material

Aluminium. Oval cross section bar.

- Version BL: blank, tumbled.
- Version SW: RAL 9005 black colour, matte finish, epoxy resin coating.
- Version EL: anodised, natural colour, matte finish.
- Version RS: RAL 3000 red colour, epoxy resin coating.
- Version SR: RAL 9006 silver colour, matte finish, epoxy resin coating.

### Assembly

Tapped blind holes.

*Special executions on request (For sufficient quantities)*

Different lengths.

### Features and applications

Cabinet „U“ handles GN 565 are produced from profiled aluminum extrusions. Their special features are their rigidity and ergonomical shaping.

The manufacturing process (bending) allows the production of special lengths in relatively small quantities.

Standard Elements	Main dimensions					Mounting holes		Weight
Description	b	l ±0.25	a	h	r	d	t <sub>min.</sub>	g
GN 565-20-100-BL	20	100	13	49	13	M6	10	87
GN 565-20-100-SW	20	100	13	49	13	M6	10	87
GN 565-20-100-EL	20	100	13	49	13	M6	10	87
GN 565-20-100-RS	20	100	13	49	13	M6	10	87
GN 565-20-100-SR	20	100	13	49	13	M6	10	87
<b>GN 565-20-112-BL</b>	<b>20</b>	<b>112</b>	<b>13</b>	<b>49</b>	<b>13</b>	<b>M6</b>	<b>10</b>	<b>97</b>
GN 565-20-112-SW	20	112	13	49	13	M6	10	97
GN 565-20-112-EL	20	112	13	49	13	M6	10	97
GN 565-20-112-RS	20	112	13	49	13	M6	10	97
GN 565-20-112-SR	20	112	13	49	13	M6	10	97
GN 565-20-117-BL	20	117	13	49	13	M6	10	100
GN 565-20-117-SW	20	117	13	49	13	M6	10	100
GN 565-20-117-EL	20	117	13	49	13	M6	10	100
GN 565-20-117-RS	20	117	13	49	13	M6	10	100
GN 565-20-117-SR	20	117	13	49	13	M6	10	100
GN 565-20-120*-BL	20	120	13	49	13	M6	10	105
GN 565-20-120*-SW	20	120	13	49	13	M6	10	105
GN 565-20-120*-EL	20	120	13	49	13	M6	10	105
GN 565-20-120*-RS	20	120	13	49	13	M6	10	105
GN 565-20-120*-SR	20	120	13	49	13	M6	10	105
GN 565-20-128-BL	20	128	13	51	13	M6	10	107
GN 565-20-128-SW	20	128	13	51	13	M6	10	107
GN 565-20-128-EL	20	128	13	51	13	M6	10	107
GN 565-20-128-RS	20	128	13	51	13	M6	10	107
GN 565-20-128-SR	20	128	13	51	13	M6	10	107
GN 565-20-160-BL	20	160	13	51	13	M6	10	127
GN 565-20-160-SW	20	160	13	51	13	M6	10	127
GN 565-20-160-EL	20	160	13	51	13	M6	10	127
GN 565-20-160-RS	20	160	13	51	13	M6	10	127
GN 565-20-160-SR	20	160	13	51	13	M6	10	127
GN 565-20-180*-BL	20	180	13	51	13	M6	10	138
GN 565-20-180*-SW	20	180	13	51	13	M6	10	138
GN 565-20-180*-EL	20	180	13	51	13	M6	10	138
GN 565-20-180*-RS	20	180	13	51	13	M6	10	138
GN 565-20-180*-SR	20	180	13	51	13	M6	10	138
GN 565-20-200-BL	20	200	13	51	13	M6	10	150
GN 565-20-200-SW	20	200	13	51	13	M6	10	150

GN 565-20-200-EL	20	200	13	51	13	M6	10	150
GN 565-20-200-RS	20	200	13	51	13	M6	10	150
GN 565-20-200-SR	20	200	13	51	13	M6	10	150
GN 565-20-235*-BL	20	235	13	51	13	M6	10	172
GN 565-20-235*-SW	20	235	13	51	13	M6	10	172
GN 565-20-235*-EL	20	235	13	51	13	M6	10	172
GN 565-20-235*-SR	20	235	13	51	13	M6	10	172
GN 565-20-235*-RS	20	235	13	51	13	M6	10	172
GN 565-26-112-BL	26	112	17	55	17	M8	12	160
GN 565-26-112-SW	26	112	17	55	17	M8	12	160
GN 565-26-112-EL	26	112	17	55	17	M8	12	160
GN 565-26-112-RS	26	112	17	55	17	M8	12	160
GN 565-26-112-SR	26	112	17	55	17	M8	12	160
GN 565-26-117-BL	26	117	17	55	17	M8	12	166
GN 565-26-117-SW	26	117	17	55	17	M8	12	166
GN 565-26-117-EL	26	117	17	55	17	M8	12	166
GN 565-26-117-RS	26	117	17	55	17	M8	12	166
GN 565-26-117-SR	26	117	17	55	17	M8	12	166
GN 565-26-120-BL	26	120	17	55	17	M8	12	170
GN 565-26-120-SW	26	120	17	55	17	M8	12	170
GN 565-26-120-EL	26	120	17	55	17	M8	12	170
GN 565-26-120-RS	26	120	17	55	17	M8	12	170
GN 565-26-120-SR	26	120	17	55	17	M8	12	170
GN 565-26-125-BL	26	125	17	55	17	M8	12	178
GN 565-26-125-SW	26	125	17	55	17	M8	12	178
GN 565-26-125-EL	26	125	17	55	17	M8	12	178
GN 565-26-125-RS	26	125	17	55	17	M8	12	178
GN 565-26-125-SR	26	125	17	55	17	M8	12	178
GN 565-26-128-BL	26	128	17	55	17	M8	12	183
GN 565-26-128-SW	26	128	17	55	17	M8	12	183
GN 565-26-128-EL	26	128	17	55	17	M8	12	183
GN 565-26-128-RS	26	128	17	55	17	M8	12	183
GN 565-26-128-SR	26	128	17	55	17	M8	12	183
GN 565-26-160-BL	26	160	17	57	17	M8	12	211
GN 565-26-160-SW	26	160	17	57	17	M8	12	211
GN 565-26-160-EL	26	160	17	57	17	M8	12	211
GN 565-26-160-RS	26	160	17	57	17	M8	12	211
GN 565-26-160-SR	26	160	17	57	17	M8	12	211
GN 565-26-179-BL	26	179	17	57	17	M8	12	230
GN 565-26-179-SW	26	179	17	57	17	M8	12	230
GN 565-26-179-EL	26	179	17	57	17	M8	12	230
GN 565-26-179-RS	26	179	17	57	17	M8	12	230
GN 565-26-179-SR	26	179	17	57	17	M8	12	230
GN 565-26-192-BL	26	192	17	57	17	M8	12	245

GN 565-26-192-SW	26	192	17	57	17	M8	12	245
GN 565-26-192-EL	26	192	17	57	17	M8	12	245
GN 565-26-192-RS	26	192	17	57	17	M8	12	245
GN 565-26-192-SR	26	192	17	57	17	M8	12	245
GN 565-26-300-BL	26	300	17	57	17	M8	12	350
GN 565-26-300-SW	26	300	17	57	17	M8	12	350
GN 565-26-300-EL	26	300	17	57	17	M8	12	350
GN 565-26-300-RS	26	300	17	57	17	M8	12	350
GN 565-26-300-SR	26	300	17	57	17	M8	12	350
GN 565-26-400-BL	26	400	17	57	17	M8	12	445
GN 565-26-400-SW	26	400	17	57	17	M8	12	445
GN 565-26-400-EL	26	400	17	57	17	M8	12	445
GN 565-26-400-RS	26	400	17	57	17	M8	12	445
GN 565-26-400-SR	26	400	17	57	17	M8	12	445
GN 565-26-500-BL	26	500	17	57	17	M8	12	538
GN 565-26-500-SW	26	500	17	57	17	M8	12	538
GN 565-26-500-EL	26	500	17	57	17	M8	12	538
GN 565-26-500-RS	26	500	17	57	17	M8	12	538
GN 565-26-500-SR	26	500	17	57	17	M8	12	538
GN 565-20-235*-SR	26	500	17	57	17	M8	12	538

\* suitable for 19" rack and enclosure layout

This product had the following design awards:



ELESA and GANTER models all rights reserved in accordance with the law. Always mention the source when reproducing our drawings.

STANDARD MACHINE ELEMENTS WORLDWIDE