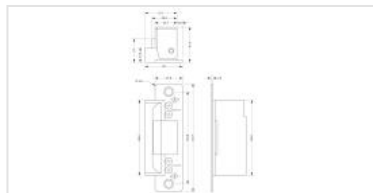


7100 - Electric Strike for Single Leaf Aluminium Doors

Mechanical Locking	+
Access Control	×
Electric Strikes	×
7100 Electric Strikes	×
7100 - Electric Strike for Single Leaf Aluminium Doors	
7101 - Electric Strike for Double Leaf Aluminium Doors	
7113 - Electr	



With the development of new products Adams Rite is using their experience and innovation to produce quality products for existing and new markets.

In this section you will find products that meet the needs of almost any security application or standard in Europe.

Application

ic
Strike

7130
-
Electr
ic
Strike
for
MS
1850
repla
ceme
nt

The Adams Rite 7100 Series is for remote use access control of any door equipped with Adams Rite 4700 series (or similar) deadlatch.

The 7100 has flat faceplates for installing in the frame of a single action single leaf doors.

Specification

7140
-
Electr
ic
Strike
for
Steel
Door
s

7160
-
Deep
Jaw
Electr
ic
Strike

7170
-
Deep
Jaw
Electr
ic
Strike

7181
-
Electr
ic
Strike
with
Steel
Wrap
aroun
d
Facep
late

7108
and
7128
-
Ramp
Jaw
Electr
ic
Strike

- Suitable for use on aluminium doors
- Facility to change duty from fail-safe to fail secure and vice-versa
- Non-handed
- The compact mechanism fits into an aluminium jamb section as shallow as 44.45mm
- Electrical actuation unlocks the strike jaw, releasing the latchbolt so the door can be opened without operating the latch itself
- The 7100 series have flat faceplates for mounting in the frame of a single action single leaf doors.
- 907kg holding force (2000lbs)
- Round corners of faceplate to aid installation into aluminium doors
- 3 year guarantee

Finish

RiteKey Keypad ~ Push-to-Exit Button ~ Power Supply Unit
~4710 Deadlatch ~ 4750 Deadlatch

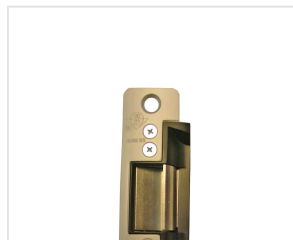
Standards

Current Draw: 12vAC=1.48A, 12vDC=0.332A,
24vAC=0.74A, 24vDC=0.19A (nominal).
DC intermittent and continuous units are silent,
AC intermittent units "buzz" on operation

7110 and 7111 - Electr ic Strike	
7400 Electric Strikes	+
Magnetic Locks and Bolts	+
Other	+
Door Hardware	+
Door Closers	+
Exit Devices	+
Pemko - Door Sealing Systems	+

Voltage	±10%.
Tolerance:	
Powered by:	Internal solenoid
Monitoring:	(Optional) Single: Latch only, Double: Latch & solenoid.
Duty:	Fail-safe or fail-secure (convertible without additional parts). DC power supply required for fail-safe operation.
Jaw Strength:	907kg (2000lbs).
Case:	85.6mm x 28.6mm x 41.6mm. Zinc aluminium alloy.
Mechanism:	Stainless steel internal blocking mechanism
Strike Opening:	36.5mm x 15.9mm x 12.7mm. Stainless steel bolt retainer jaw.
Door gap:	Minimum 3mm (1/8"), operational door gap 3-5mm.
Faceplate:	Aluminium. 123.7mm x 31.8mm. Flat.
Finishes:	Satin Anodised Aluminium
Subcover:	Basic subcover lip will suit a 44.45mm (1 3/4") thick door that closes flush with jamb edge. For extended bolt-on subcovers see ordering codes.
Standards:	ANSI/BHMA 156.5 Grade 1. UL Listed for burglary resistance.

[Ordering Options](#)





7101 - Electric Strike for Double Leaf Aluminium Doors



7140 - Electric Strike for Steel Doors



7170 - Deep Jaw Electric Strike

ASSA ABLOY, the global leader in door opening solutions
Adams Rite is a trading division of ASSA ABLOY



© ASSA ABLOY
Legal | Contact | ASSA ABLOY UK