

# 《 INSTRUCTION MANUAL 》

## POWER CUTTER MP55A

### ADDITIONAL SAFETY RULES

Model No. MP55 AK.



- ① Hold the tool firmly your hand. *Blade sides.*
- ② Keep hands away from the Blades.



- ③ Don't touch the blades without shutting off air.
- ④ Eye protection must be used or safety glasses worn.

### NOISE GENERATION

The noise generated by this machine exceeds 85dB(A) during operation. Soundproof device and ear protector should be used to protect operator from the noise. The noise generated by this machine is measured according to IECOPub123, DIN45634, BS3489.

### HOW TO USE

- ① Connect air-hose with Inlet fitting. (part NO.177)
- ② Adjust the position of lever by turning Body B according to the job to be done.  
(Never turn Body B more than 180° degrees.)
- ③ Put a work piece between Blades and push lever. (part NO. 8)

### REMARKS

- ① Never attempt to cut without work piece. You will probably ruin cutters through such action.
- ② Set air pressure at 0.5~0.6 MPa.( 70~85 PSI )
- ③ Use an oiler.

### CHANGING BLADES

Worn can be changed in the following way:

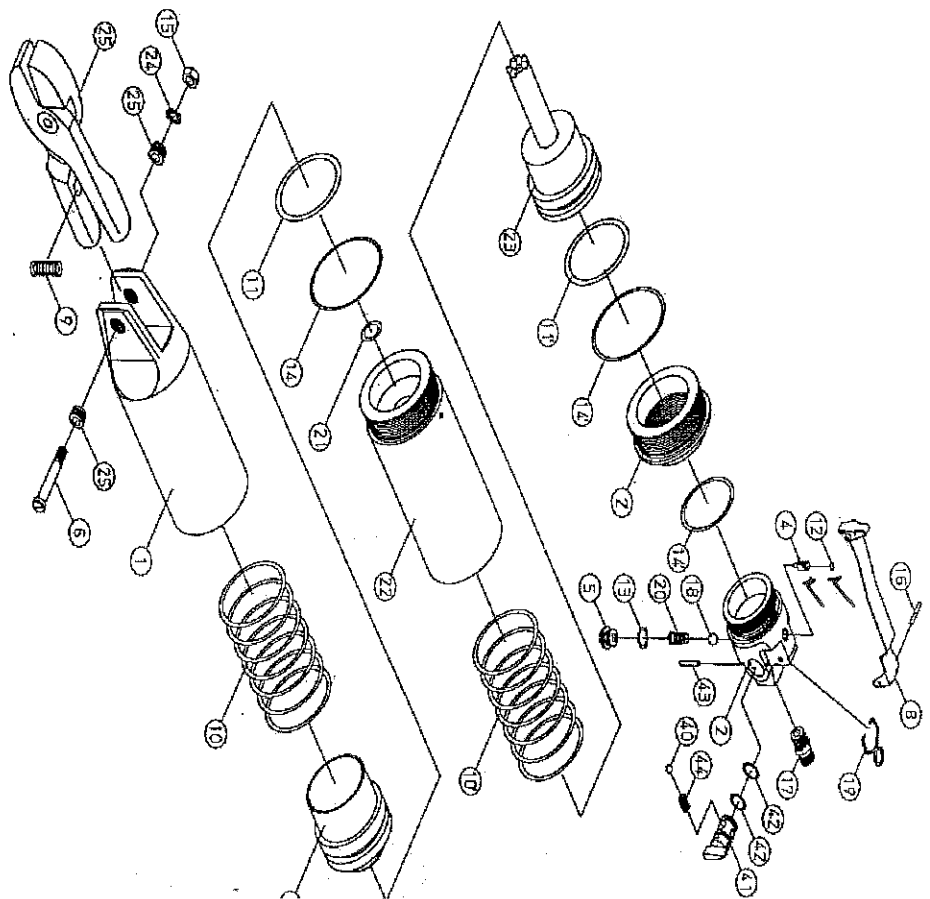
- ① Shut off air.
- ② Unscrew pivot pin.( part NO. 6 )
- ③ Remove Blades (part NO. 7 ) by hand. Insert Spring ( part NO. 9 ) carefully when in stalling cutters in to Body.

### CHANGING O-RING

Worn-out O-Ring can be changed in the following way for O-Ring. ( part NO.11 )

- ① Shut off air.
- ② Take off Body B by turning to the left.
- ③ Pull out piston ( part NO. 3 ) for replacement.

### DISASSEMBLY AND ASSEMBLY INSTRUCTION



### PARTS LIST

NO.	DESCRIPTION	NO.	DESCRIPTION	NO.	DESCRIPTION	NO.	DESCRIPTION
1	Body A	9	Spring	15	Nut	24	Washer
2	Body B	10	Spring	16	Spring Pin	25	Bush
2'	Connector	10'	Spring	17	Air Nipple	40	Urethane
3	Piston A	11	O-Ring	18	Urethane Ball	41	Valve Swi
4	Valve Pin	11'	O-Ring	19	Hanger	42	O-Ring
5	Screw	12	O-Ring	20	Spring	43	Spring Pin
6	Screw Pin	13	O-Ring	21	O-Ring	44	Spring
7	Blades	14	O-Ring	22	Body C		
8	Lever	14'	O-Ring	23	Piston B		