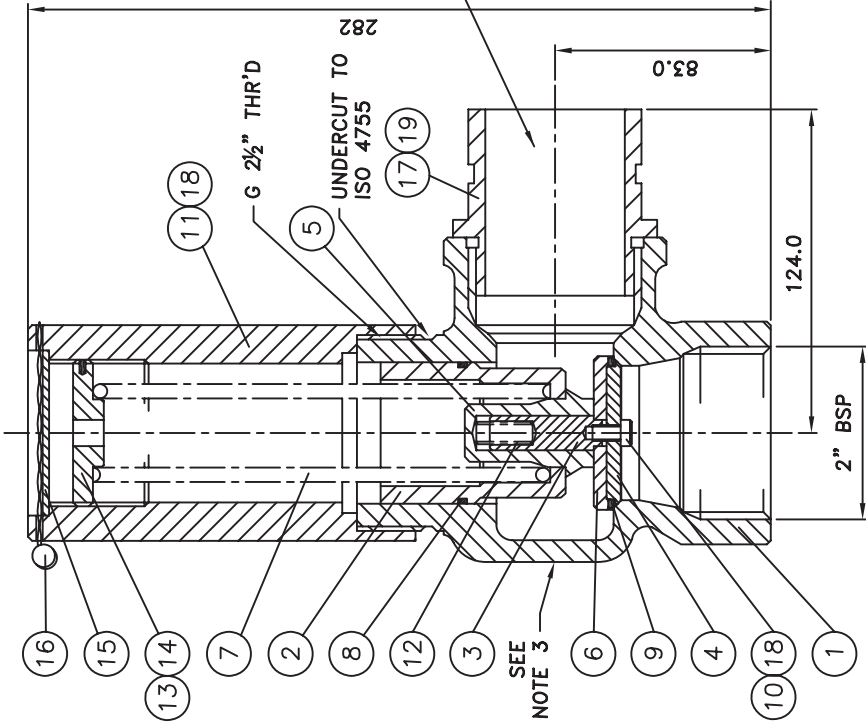


COPYRIGHT IN THIS DRAWING IS THE PROPERTY OF SEETRU LIMITED, AND THE DRAWING IS LENT WITHOUT CONSIDERATION OTHER THAN THE BOPROWERS' AGREEMENT THAT IT WAS NOT TO BE REPRODUCED, COPIED, LENT OR DISPOSED OF OR THE INFORMATION THEREON CONTAINED IMPARTED TO THIRD PARTIES, DIRECTLY OR INDIRECTLY, NOR USED FOR ANY PURPOSE OTHER THAN THAT FOR WHICH IT WAS SPECIFICALLY FURNISHED WITHOUT WRITTEN CONSENT OF SEETRU LIMITED © SEETRU 2004.



NOTES:-
 1. ASSEMBLE ITEM 10 TO ITEM 3, AND ITEM 11 TO ITEM 18. ENSURE THERE IS NO UNCURED RESIDUE.
 2. ASSEMBLE ITEM 17 TO ITEM 1 USING ITEM 19 TO EFFECT A GAS TIGHT SEAL. ENSURE THAT THERE IS NO UNCURED RESIDUE.
 3. ASSEMBLE ITEM 8 TO ITEM 2 USING A SMALL AMOUNT OF ROCOL ANTI-SEIZE COMPOUND J166.
 4. LIBERALLY COAT INTERNAL PISTON BORE OF ITEM 1, AND INTERNAL SURFACE OF ITEM 11, SPRING HOUSING, WITH ROCOL ANTI-SEIZE COMPOUND J166. GREASE NOT TO HAVE CONTACT WITH ANY THREADS.
 5. THE MATING SURFACES BETWEEN ITEM 3 & 6 MUST BE DRY AND CLEAN. NO GREASE OR LUBRICANT MUST BE APPLIED.

2" N.B. VICTAULIC COUPLING ADAPTORS.

NOTES:-
 LASER-ETCH ON SPRING HOUSING:-
 SEETRU-ENGLAND-UK,
 SET PRESSURE 18.0 BAR.G.
 MAX. PRESSURE 36 BAR.G.
 HYDRAULIC TEST PRESSURE 54 BAR.G.
 SEETRU PT. No. 419000148

NOTE 2:-
 DECLARATION OF CONFORMITY TO P.E.D.
 CAT 1 MODULE A.

NOTE 3:-
 LASER-ETCH ATLAS COPCO PT. No. HERE
 IN 3.5mm HIGH CHARACTERS.

MINIMUM FLOWING PRESSURE = 18.0 BAR.G.
 PRESSURE DROP AT 30 BAR.G. AND 560 L/SEC = 0.2 BAR.G. MAX.
 DESIGN PRESSURE = 36 BAR.G.
 MAXIMUM WORKING PRESSURE = 30 BAR.G.
 HYDRAULIC TEST PRESSURE = 54 BAR.G.
 TEMPERATURE RANGE = -25°C TO 180°C

COMPONENTS WHICH ARE SUBJECT TO CORROSION ARE PROTECTED, AS SHOWN IN PARTS LIST.

NOTE: SEETRU TO SET VALVE TO 18.0 BAR.G.

THIS DRAWING CONFORMS TO BS308	LIMITS UNLESS STATED:	— STRAIGHTNESS
BSP THREADS TO BS21 OR BS2779	DECIMAL PLACES (X) ±0.25 WHOLE NUMBERS (X) ±0.5	∇ FLATNESS
METRIC THREADS TO BS3643	ANGLES ±0.5°	○ ROUNDNESS
MACHINE AT ∇	CASTINGS ±0.8	⊙ CYLINDRICITY
		↗ RUN OUT
		// PARALLELISM
		⊥ PERPENDICULARITY
		⊕ TRUE POSITION
		◎ CONCENTRICITY
ALBION DOCKSIDE WORKS HANOVER PLACE BRISTOL BS1 6UT ENGLAND		
SEETRU LTD.		

TITLE		MINIMUM PRESSURE CHECK VALVE	
THIRD ANGLE PROJECTION	DRAWN	JIC	DRG. No.
	DATE	19.5.04	419000148
	CHECKED	CPD	
ALL DIMENSIONS IN MILLIMETRES UNLESS STATED	DATE	19.5.04	U/O
	SCALE	NTS	

ISSUE	DATE	DRAWN	MOD No.	MODIFICATION
2	09.12.04	JCF	4814	ATLAS COPCO PT No & NOTE 3 ADDED.
3	7.10.05	AJMP	5006	DESIGN PRESSURE & MAX. PRESSURE WAS 34 BAR.G.
4	27.10.05	JCF	5015	ATLAS COPCO PT No WAS 1604 6724 00.
5	12.03.12	JIM	6398	MAX PRESSURE WAS 35 BAR, NOW 36 BAR.

ITEM No.	A/R	LOCTITE	PIPE SEALANT, TYPE 577
19	A/R	PERMABOND	A025
18	A/R	VICTAULIC ADAPTOR	MILD STL BS970 220M07 ZINC PLATED
17	A/R	WIRELOCKING	LEAD & ST.STL.
16	A/R	NAMEPLATE	ALUM. ALLOY ANODISED
15	A/R	LOCKING SLUG	NYLON 6.6
14	A/R	ADJUSTER	BRASS BS2874 CZ121
13	A/R	SPRING	ST.STL. BS2056 302S26 GRADE 2
12	A/R	CAP	MILD STL BS970 220M07 ZINC PLATED
11	A/R	CAP HEAD SCREW	HT. STEEL. FKM05020360
10	A/R	O'RING	VITON V1610015
9	A/R	O'RING	VITON V1610014
8	A/R	SPRING	ZINC PLATED BS1429 Cr Vd 735 A50
7	A/R	PISTON PLATE	ALUM. ALLOY ANODISED BS1474 2014A 16
6	A/R	PISTON INNER	ALUM. ALLOY ANODISED BS1474 6082 16
5	A/R	SEAL SHROUD	ALUM. ALLOY ANODISED BS1474 2014A 16
4	A/R	PLUNGER STEM	ALUM. ALLOY ANODISED BS1474 6082 16
3	A/R	PISTON OUTER	ALUM. ALLOY ANODISED BS1474 6082 16
2	A/R	BODY	SPHEROIDAL GRAPHITE CAST IRON EN1563 GRADE EN-GJS-700-2. SHERARDIZED
1	A/R		

ISSUE	5
-------	---