

Power relay

**Maximum contact load**  
 10 A / 250 V AC-1  
 10 A / 30 V DC-1  
 50 mA / 10 V

**Recommended minimum contact load**

**Contacts**  
 Material AgCuNi  
 10 A  
 40 A  
 250 V  
 2500 VA AC-1  
 300W / 90W

Rated operational current

Max. inrush current (20 ms)

Rated switching voltage

Max. AC load

Max. DC load 30V / 230V DC-1 fig. 2

**Coil**

Pick-up voltage

Release voltage AC / DC

Nominal power AC / DC

$\leq 0.8 \times U_N$

$> 0.15 \times U_N / > 0.05 \times U_N$

$2.5 \text{ VA} / 1.2 \text{ W}$

**Coil Table**

| $V_N$ | AC   | $\Omega$ | mA  | $V_N$ | DC  | $\Omega$ | mA |
|-------|------|----------|-----|-------|-----|----------|----|
| 24    | 52   | 104      | 12  | 115   | 104 |          |    |
| 48    | 240  | 55       | 24  | 480   | 50  |          |    |
| 115   | 1350 | 23       | 48  | 1850  | 26  |          |    |
| 230   | 5600 | 11.5     | 110 | 9000  | 12  |          |    |
|       |      |          | 220 | 29000 | 7.6 |          |    |

Types with LED indicator take additional 5 ... 10 mA @  $\leq 80 \text{ V}$

**Insulation**

Contact Open 1.5 kV rms / 1 min

Contact Contact 1.5 kV rms / 1 min

Contact Coil 2 kV rms / 1 min

**Specifications**

Ambient temperature operation, storage -40 ... 70 °C (no ice)

Pickup time AC / DC 3 ... 10 ms /  $\leq 12 \text{ ms}$

Release time AC / DC 2 ... 15 ms /  $\leq 3.5 \text{ ms}$

Bounce time NO contact AC / DC 3 ... 6 ms / approx. 3.5 ms

Mechanical life  $\geq 100.000.000$  operations

Max. switching frequency at rated load 360/h

Weight 80 g

**Product References**

AC 50 Hz / 60 Hz: 24, 48, 115, 230 (240)

LED C31L/AC...V

C31/DC...V

LED + Free wheeling diode C31DL/DC...V

Railway EN 50155 C31D/R DC...V

\* ... List Coil Voltage to complete Product References

**Accessories**

Socket S3-B, S3-S, S3-PO, S3-M0, S3-M1

Blanking Plug SO-NP (BAG 10 PCS)



**Connection diagram**

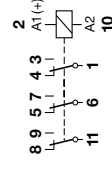


fig. 1 AC voltage endurance

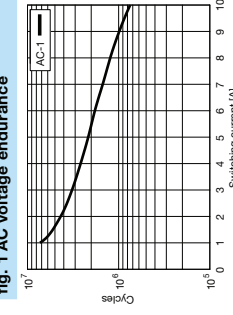
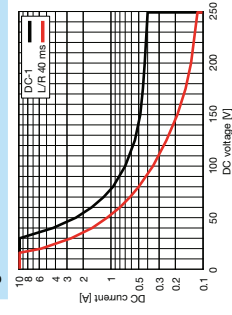
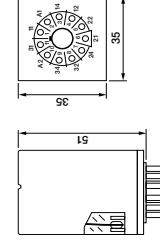


fig. 2 DC load limit curve



**Dimensions (mm)**



**Technical approvals, conformities**



IEC/EN 61810; IEC/EN 60947; IEC/EN 50155  
 IEC/EN 61373; IEC/EN 45545  
 NF F 16-101/102

Control relay

**Maximum contact load**  
 6 A / 250 V AC-1  
 6 A / 30 V DC-1  
 1 mA / 5 V

**Recommended minimum contact load**

**Contacts**  
 Material AgCuNi  
 6 A  
 15 A  
 250 V  
 1500 VA AC-1  
 200 W / 90 W

Rated operational current

Max. inrush current (20 ms)

Rated switching voltage AC-1

Max. AC load

Max. DC load 30V / 230V DC-1 fig. 2

**Coil**

Pick-up voltage

Release voltage AC / DC

Nominal power AC / DC

$\leq 0.8 \times U_N$

$> 0.15 \times U_N / > 0.05 \times U_N$

$2.5 \text{ VA} / 1.2 \text{ W}$

**Coil Table**

| $V_N$ | AC   | $\Omega$ | mA  | $V_N$ | DC  | $\Omega$ | mA |
|-------|------|----------|-----|-------|-----|----------|----|
| 24    | 52   | 104      | 12  | 115   | 104 |          |    |
| 48    | 240  | 55       | 24  | 480   | 50  |          |    |
| 115   | 1350 | 23       | 48  | 1850  | 26  |          |    |
| 230   | 5600 | 11.5     | 110 | 9000  | 12  |          |    |
|       |      |          | 220 | 29000 | 7.6 |          |    |

Types with LED indicator take additional 5 ... 10 mA @  $\leq 80 \text{ V}$

**Insulation**

Contact Open 1.5 kV rms / 1 min

Contact Contact 1.5 kV rms / 1 min

Contact Coil 2 kV rms / 1 min

**Specifications**

Ambient temperature operation, storage -40 ... 70 °C (no ice)

Pickup time AC / DC 3 ... 10 ms /  $\leq 12 \text{ ms}$

Release time AC / DC 2 ... 15 ms /  $\leq 3.5 \text{ ms}$

Bounce time NO contact AC / DC 3 ... 6 ms / approx. 3.5 ms

Mechanical life  $\geq 100.000.000$  operations

Max. switching frequency at rated load 360/h

Weight 80 g

**Product References**

AC 50 Hz / 60 Hz: 24, 48, 115, 230 (240)

LED C32L/AC...V

C32/DC...V

LED + Free wheeling diode C32DL/DC...V

Railway EN 50155 C32D/R DC...V

\* ... List Coil Voltage to complete Product References

**Accessories**

Socket S3-B, S3-S, S3-PO, S3-M0, S3-M1

Blanking Plug SO-NP (BAG 10 PCS)



**Connection diagram**

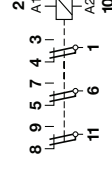


fig. 1 AC voltage endurance

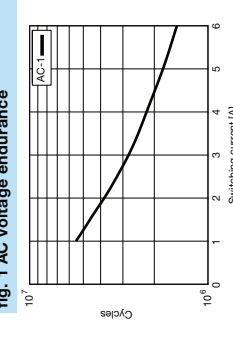
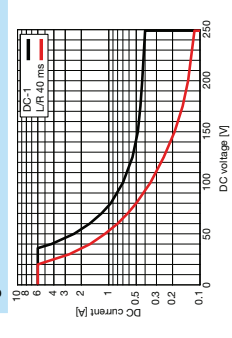
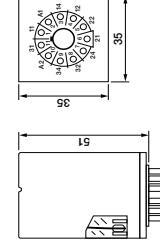


fig. 2 DC load limit curve



**Dimensions (mm)**



**Technical approvals, conformities**



IEC/EN 61810; IEC/EN 60947; IEC/EN 50155  
 IEC/EN 61373; IEC/EN 45545  
 NF F 16-101/102