

VIZI
TOUCH





DIESEL ENGINE FIRE PUMP CONTROLLER

OPERATING INSTRUCTIONS


NORMAL OPERATION

- Turn main switch to AUTO position (A) and close main switch cover.
- Engine may start if water pressure is below cut-in setting.



EMERGENCY START

- Open or break main switch cover and turn main switch to HAND position (H).
- Press either or both   buttons until engine starts.

STOPPING

- If all starting conditions have been eliminated, press the  button.
- If not, or in case of an emergency, turn the main switch to OFF position (O).

RUN TEST START AND STOP

- To start, turn main switch to AUTO position (A) and press the  button.
- To stop, press  button or turn main switch to OFF position (O).



7ANG1058

VIZI TOUCH

Designed in Montreal QC Canada
by



Powered by



650mAh





Model # GPD-12-220

| | | | |
|-------------|----------|-------------------|---------------------|
| Line Volt | 208-240V | Serial # Z 112828 | Mfg date: 11-Sep-13 |
| Full charge | 10A MAX | Phase/Hz | 1 / 50-60 |
| V DC | 12 | Max. Press. | 300 PSI |
| Amp. | 1.5 | Temp. | 4° to 40° C |
| NEMA | 2 | DWVG N° | A 112828-S1 |
| Options | C19, | | |
| EMC | | | |

Emission Compl. Env. B / Immunity Compl. Env. A

DIESEL ENGINE FIRE PUMP CONTROLLER

Model # GPD-24-220

Serial # Z 111634

Mfg date: 14-Aug-13

Line Volt

208-240V

Phase/Hz

1 / 50-60

Full charge

10A MAX

Max. Press.

300 PSI

V DC

24

Temp.

4° to 40° C

Amp.

3.5

DWVG N°

A 111634-S1

NEMA

2

Options

C19,

EMC

Emission Compl. Env. B / Immunity Compl. Env. A

DIESEL ENGINE FIRE PUMP CONTROLLER



Project: _____

Customer: _____

Engineer: _____

Pump Manufacturer: _____

Drawing Submittal Package

Model GPD

Diesel Engine Driven Fire Pump Controller



Contents:

- Submittal Data Sheets
- Dimensional Data
- Wiring Schematics
- Field Connections



NOTE: The drawings included in this package are for controllers covered under our standard offering. Actual AS BUILT drawings may differ from what is shown in this package

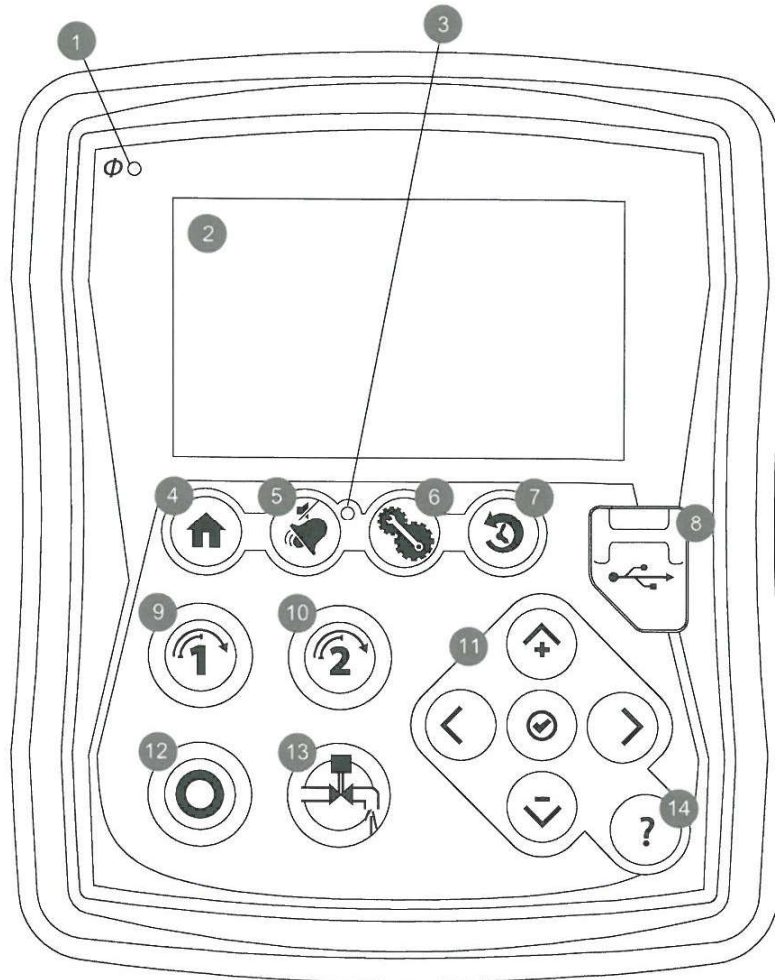
July 2012



N.Y.C.
APPROVED



ViZiTouch Operator Interface



- | | |
|-------------------------------|--------------------------------|
| 1 - Power LED | 8 - USB port |
| 2 - Color touch screen | 9 - CRANK 1 button |
| 3 - Alarm LED | 10 - CRANK 2 button |
| 4 - HOME page button | 11 - Contextual navigation pad |
| 5 - ALARM page button | 12 - STOP button |
| 6 - CONFIGURATION page button | 13 - RUN TEST button |
| 7 - HISTORY page button | 14 - HELP button |



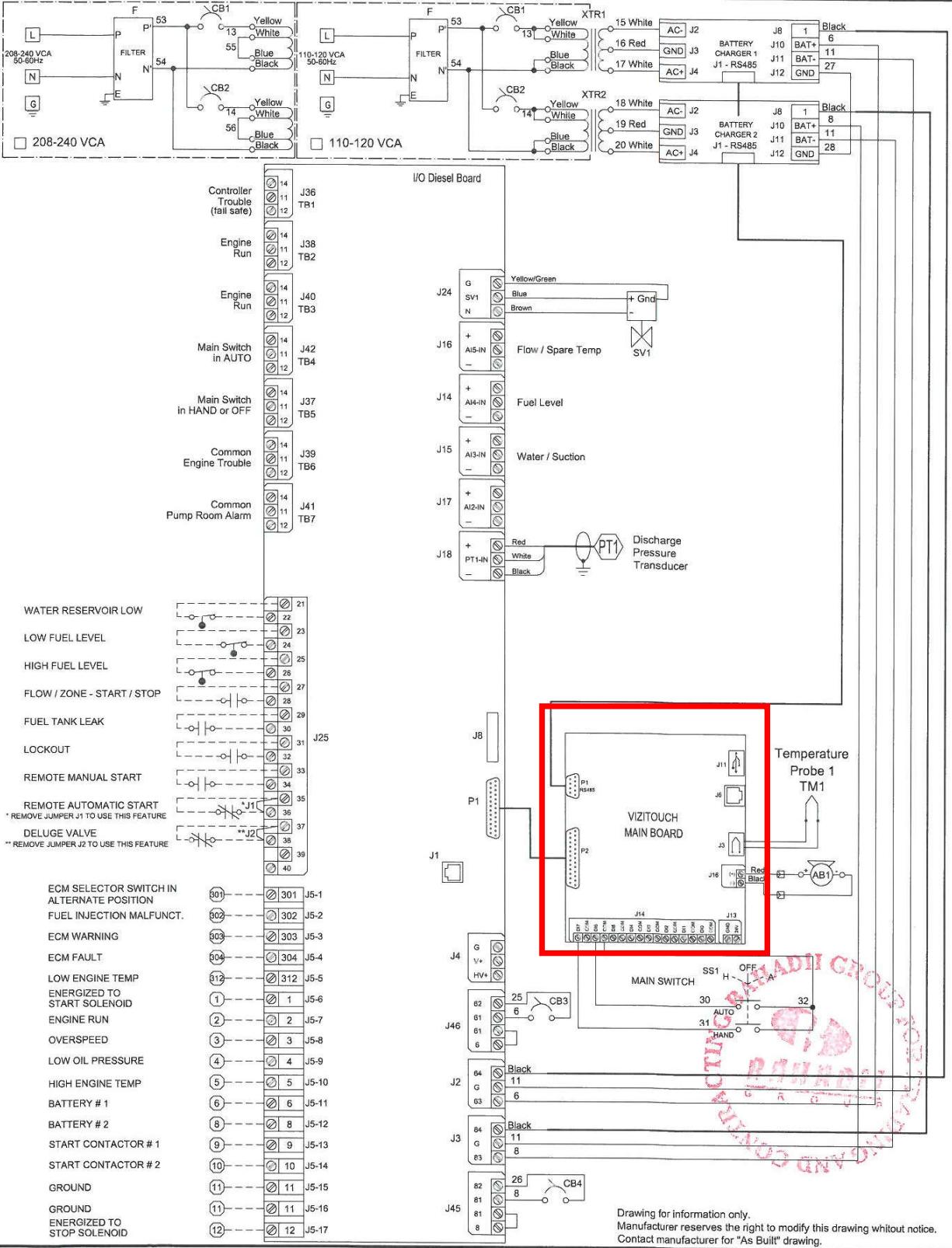
DIESEL ENGINE FIRE PUMP CONTROLLER

12Vdc or 24Vdc NEGATIVE GROUND

MODEL : GPD

Wiring schematic

BUILT TO THE LATEST EDITION OF THE NFPA 20 STANDARD



- WATER RESERVOIR LOW
- LOW FUEL LEVEL
- HIGH FUEL LEVEL
- FLOW / ZONE - START / STOP
- FUEL TANK LEAK
- LOCKOUT
- REMOTE MANUAL START
- REMOTE AUTOMATIC START
* REMOVE JUMPER J1 TO USE THIS FEATURE
- DELUGE VALVE
** REMOVE JUMPER J2 TO USE THIS FEATURE
- ECM SELECTOR SWITCH IN ALTERNATE POSITION
- FUEL INJECTION MALFUNCT.
- ECM WARNING
- ECM FAULT
- LOW ENGINE TEMP
- ENERGIZED TO START SOLENOID
- ENGINE RUN
- OVERSPEED
- LOW OIL PRESSURE
- HIGH ENGINE TEMP
- BATTERY # 1
- BATTERY # 2
- START CONTACTOR # 1
- START CONTACTOR # 2
- GROUND
- GROUND ENERGIZED TO STOP SOLENOID

Drawing for information only.
 Manufacturer reserves the right to modify this drawing without notice.
 Contact manufacturer for "As Built" drawing.



NYC
 Dpt of Building
 Approved

| REV. | DATE | DESCRIPTION | APP. |
|------|----------|----------------------|------|
| 1. | 12/05/30 | Correct Signal Input | DES. |
| 0. | 11/10/12 | FIRST ISSUE | VER. |
| | | | APP. |

Drawing No.
GPD-WS500/E