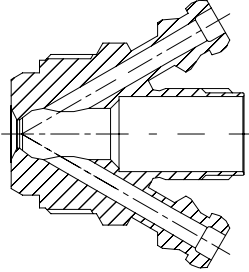
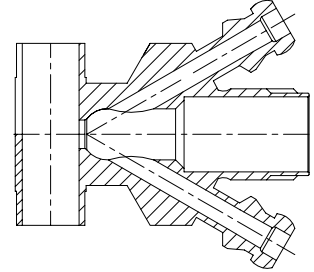


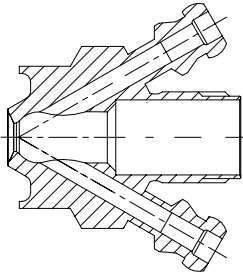
Valve body Type S
Item no.: 400031



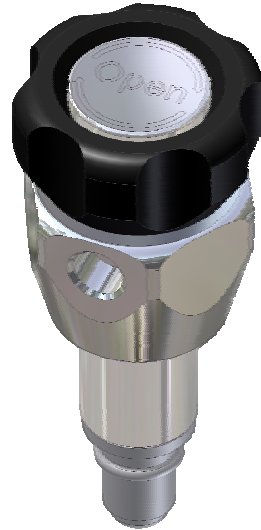
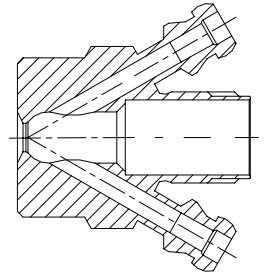
Valve body Type P
Item no.: 400017



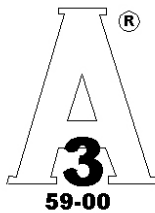
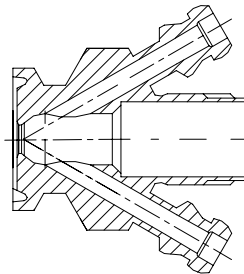
Valve body Type P
Item no.: 400011



Valve body Type T
Item no.: 400001



Valve body Type C
Item no.: 400021



Spare parts:



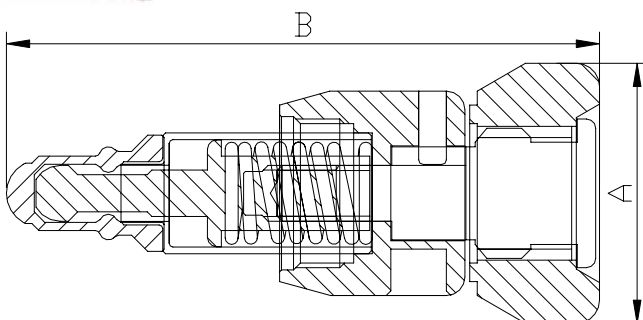
PTFE (TFM 1600) membrane
Item no. 400055



EPDM membrane
Item no. 400052



Silicone membrane
Item no. 400051



Where to use :	With M4 valve bodies	
How to use:	Manually operated	
Installation:	Screwed in Valve body	
Material:		
Steel Parts:	AISI 304 / 316 / 316L(1.4404)	
Membrane	Silicone/ EPDM/ PTFE	
Knob:	PEHD/black	
Key measurements		
Drawing part A:	28 mm.	1.1 In.
Drawing part B:	66 mm.	2.6 In.
Net weight:	0.135 kg./pc	0.3 lb
Temp. range:		
Silicone/EPDM	1 ^o C - 130 ^o C	34°F - 266°F
PTFE	1 ^o C - 150 ^o C	34°F - 302°F
Product pressure range:	0 - 6 bar(g)	0 - 87 psi(g)